

MATCH LINE SHEET 14

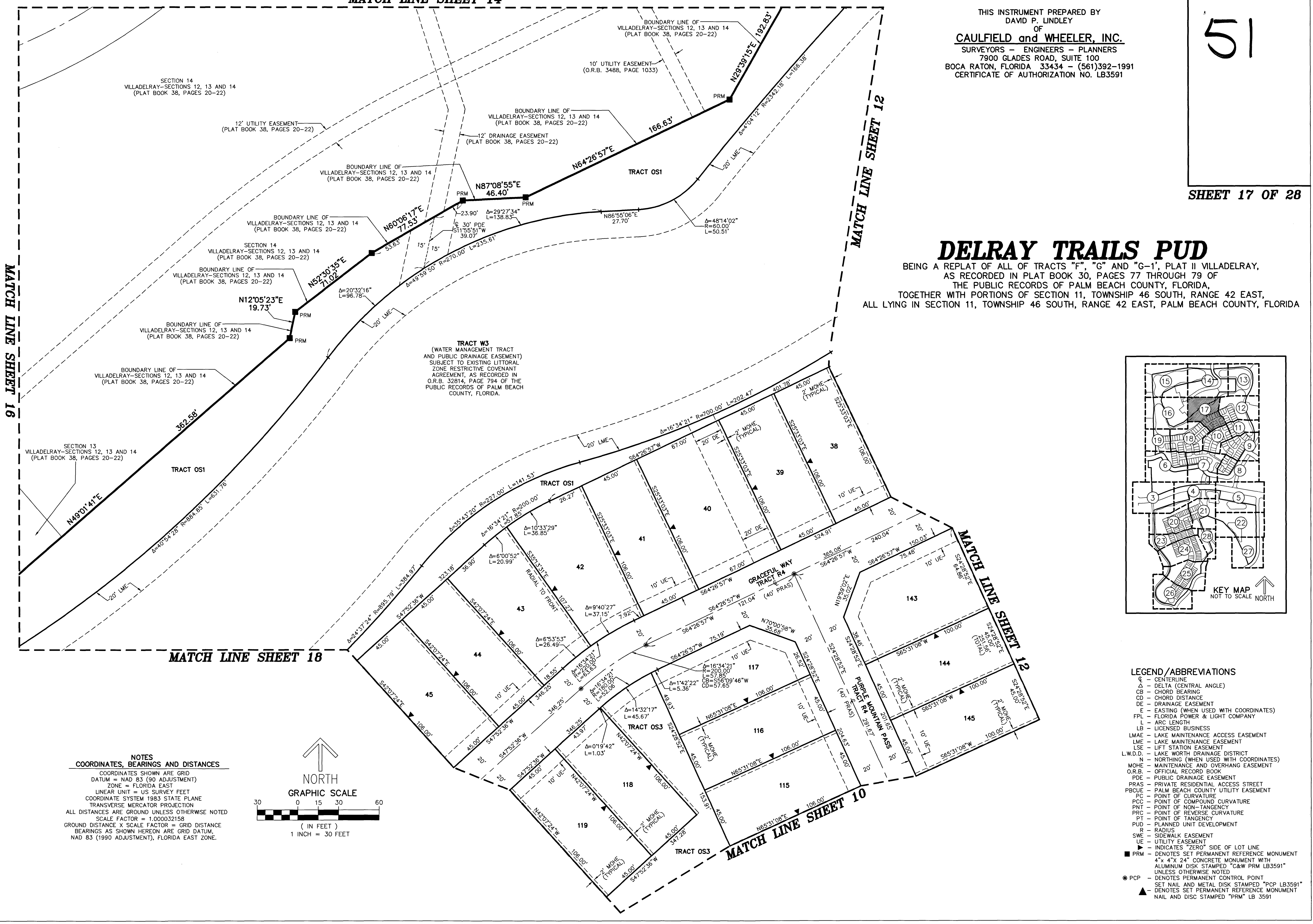
THIS INSTRUMENT PREPARED BY  
DAVID P. LINDLEY  
OF  
**CAULFIELD and WHEELER, INC.**  
SURVEYORS - ENGINEERS - PLANNERS  
7900 GLADES ROAD, SUITE 100  
BOCA RATON, FLORIDA 33434 - (561)392-1991  
CERTIFICATE OF AUTHORIZATION NO. LB3591

51

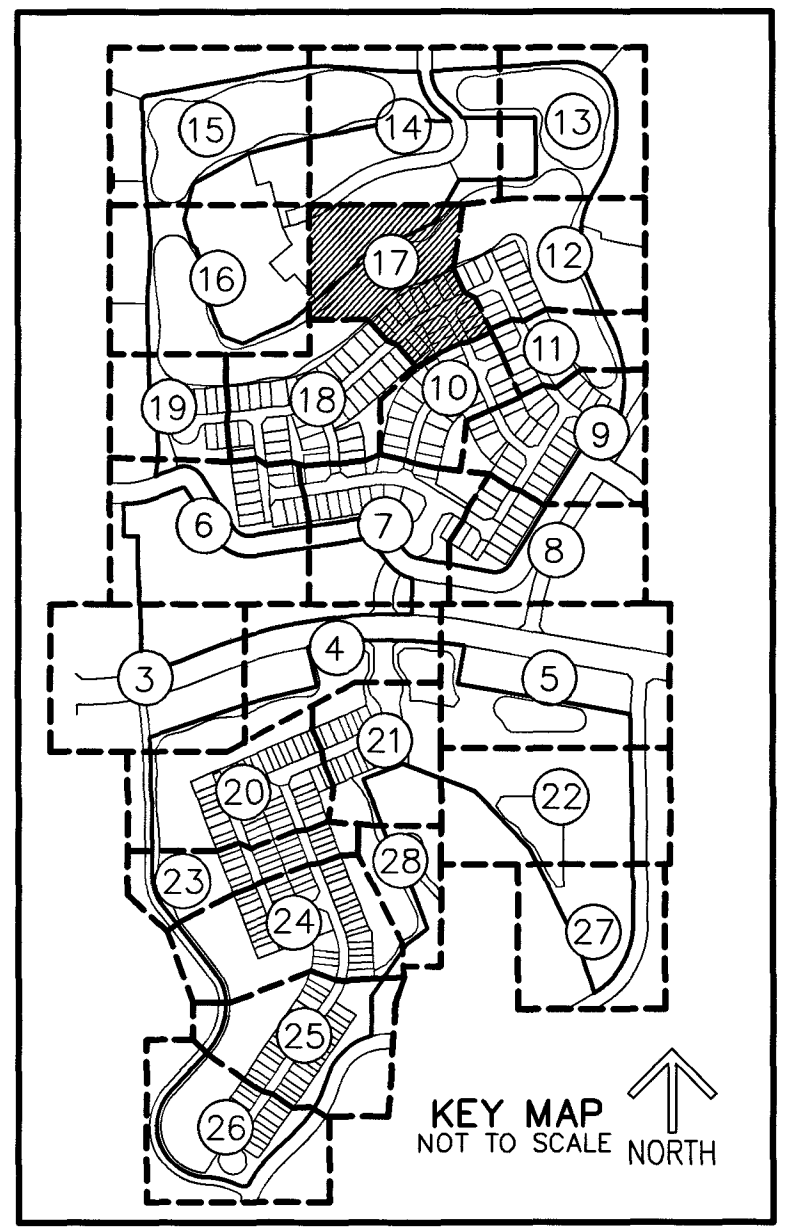
SHEET 17 OF 28

**DELRAY TRAILS PUD**

BEING A REPLAT OF ALL OF TRACTS "F", "G" AND "G-1", PLAT II VILLADELAY,  
AS RECORDED IN PLAT BOOK 30, PAGES 77 THROUGH 79 OF  
THE PUBLIC RECORDS OF PALM BEACH COUNTY, FLORIDA,  
TOGETHER WITH PORTIONS OF SECTION 11, TOWNSHIP 46 SOUTH, RANGE 42 EAST,  
ALL LYING IN SECTION 11, TOWNSHIP 46 SOUTH, RANGE 42 EAST, PALM BEACH COUNTY, FLORIDA

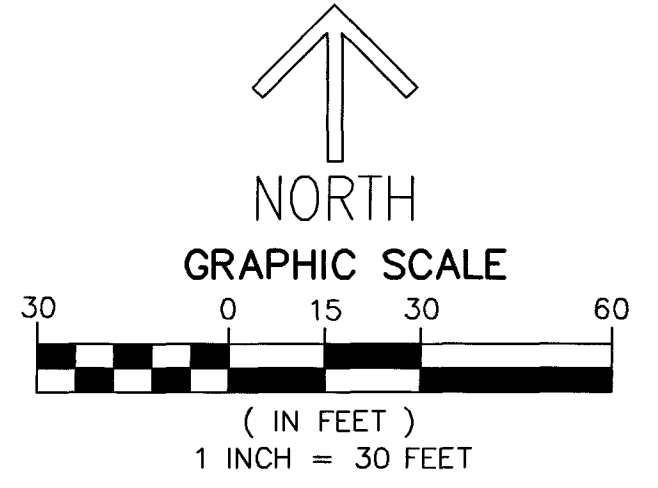


**TRACT W3**  
(WATER MANAGEMENT TRACT  
AND PUBLIC DRAINAGE EASEMENT)  
SUBJECT TO EXISTING LITORAL  
ZONE RESTRICTIVE COVENANT  
AGREEMENT, AS RECORDED IN  
O.R.B. 32814, PAGE 794 OF THE  
PUBLIC RECORDS OF PALM BEACH  
COUNTY, FLORIDA.



KEY MAP  
NOT TO SCALE  
NORTH

**NOTES**  
**COORDINATES, BEARINGS AND DISTANCES**  
COORDINATES SHOWN ARE GRID  
DATUM = NAD 83 (90 ADJUSTMENT)  
ZONE = FLORIDA EAST  
LINEAR UNIT = US SURVEY FEET  
COORDINATE SYSTEM 1983 STATE PLANE  
TRANSVERSE MERCATOR PROJECTION  
ALL DISTANCES ARE GROUND UNLESS OTHERWISE NOTED  
SCALE FACTOR = 1.000032158  
GROUND DISTANCE X SCALE FACTOR = GRID DISTANCE  
BEARINGS AS SHOWN HEREON ARE GRID DATUM,  
NAD 83 (1990 ADJUSTMENT), FLORIDA EAST ZONE.



- LEGEND/ABBREVIATIONS**
- ⊙ - CENTERLINE
  - Δ - DELTA (CENTRAL ANGLE)
  - CB - CHORD BEARING
  - CD - CHORD DISTANCE
  - DE - DRAINAGE EASEMENT
  - E - EASTING (WHEN USED WITH COORDINATES)
  - FPL - FLORIDA POWER & LIGHT COMPANY
  - L - ARC LENGTH
  - LB - LICENSED BUSINESS
  - LMAE - LAKE MAINTENANCE ACCESS EASEMENT
  - LME - LAKE MAINTENANCE EASEMENT
  - LSE - LIFT STATION EASEMENT
  - L.W.D.D. - LAKE WORTH DRAINAGE DISTRICT
  - N - NORTHING (WHEN USED WITH COORDINATES)
  - MOHE - MAINTENANCE AND OVERHANG EASEMENT
  - O.R.B. - OFFICIAL RECORD BOOK
  - PDE - PUBLIC DRAINAGE EASEMENT
  - PRAS - PRIVATE RESIDENTIAL ACCESS STREET
  - PBCUE - PALM BEACH COUNTY UTILITY EASEMENT
  - PC - POINT OF CURVATURE
  - PCO - POINT OF COMPOUND CURVATURE
  - PNT - POINT OF NON-TANGENCY
  - PRC - POINT OF REVERSE CURVATURE
  - PT - POINT OF TANGENCY
  - PUD - PLANNED UNIT DEVELOPMENT
  - R - RADIUS
  - SWE - SIDEWALK EASEMENT
  - UE - UTILITY EASEMENT
  - - INDICATES "ZERO" SIDE OF LOT LINE
  - ◆ - DENOTES SET PERMANENT CONTROL POINT
  - PRM - 4" x 4" x 24" CONCRETE MONUMENT WITH ALUMINUM DISK STAMPED "C&W PRM LB3591"
  - PCP - DENOTES PERMANENT CONTROL POINT
  - ⊙ - SET NAIL AND METAL DISK STAMPED "PCP LB3591"
  - ▲ - DENOTES SET PERMANENT REFERENCE MONUMENT NAIL AND DISC STAMPED "PRM" LB 3591